

Setting Info Password on Vision PLC

Setting Info Password on Vision PLC

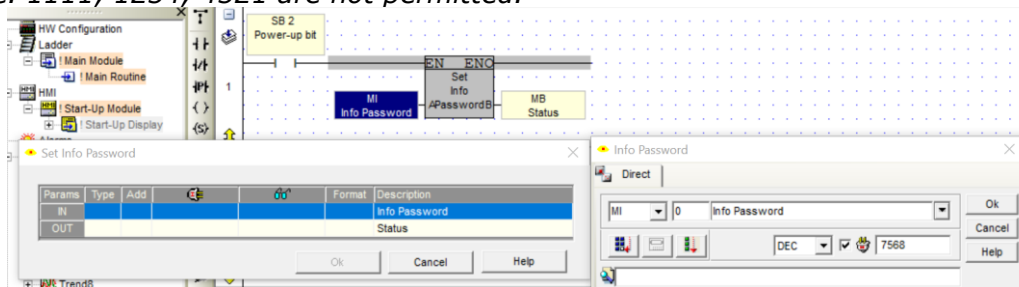
From **VisiLogic Vers. 9.9.0** onwards it is now mandatory to change the **INFO MODE** password from default value before the PLC will run. The Info Password is used to access the info mode section of the PLC from the HMI.

1. We will use a direct contact of SB 2 to set the Info password on the first scan after Power-up.
2. We will configure the **INFO MODE** password on power-up. Find the '**Set Information Mode Password**' function block in the '**Utils**' dropdown menu



3. This password cannot be set as a constant value so you will need to assign an MI variable to store the password. You can use power-up tick box and give this MI a 4-digit power-up value which can be used as the **INFO MODE** Password.

NOTE: INFO MODE Password cannot contain repeating or ascending/descending values i.e. 1111, 1234, 4321 are not permitted.



The next parameter to assign is the '**Status**' – assign this to an available MB, if this =1 then the **INFO MODE** password is OK.

Now this function block is in your ladder logic you will need to download this to the PLC and reset the device to trigger the Power-up bit and set this info password. You can then continue to use your PLC and use the newly set 4-digit password to access info mode from the HMI. You can view your info mode anytime by viewing the value stored in the MI setup here.