

UCR Setup Connection

NOTE: Connecting your UCR Router to the Internet Is needed to be able to connect your Unitronics devices to connect to the UniCloud. (UniStream PLC's this is an optional step)


1. Connect all the wiring for your UCR Router (Power, Ethernet to PC & Internet connection) and go on your web browser and type in the IP of your Router (Default 192.168.1.1)
2. You will then be asked for your username and password. (Default username: Admin default password: Admin which both are case sensitive)

Authorization Required

Please enter your username and password.

Username	<input type="text" value="Admin"/>
Password	<input type="password"/>
<input type="button" value="Login"/>	

3. If this is your first time signing in it will prompt you to immediately change your password to one of your choosing. Please choose a password and confirm your password then press save.

 **UNITRONICS** [Status](#) [Network](#) [Services](#) [System](#) [Logout](#)

Profile in use: default FW ver.: UCR_R_17.01.12.94

Change password

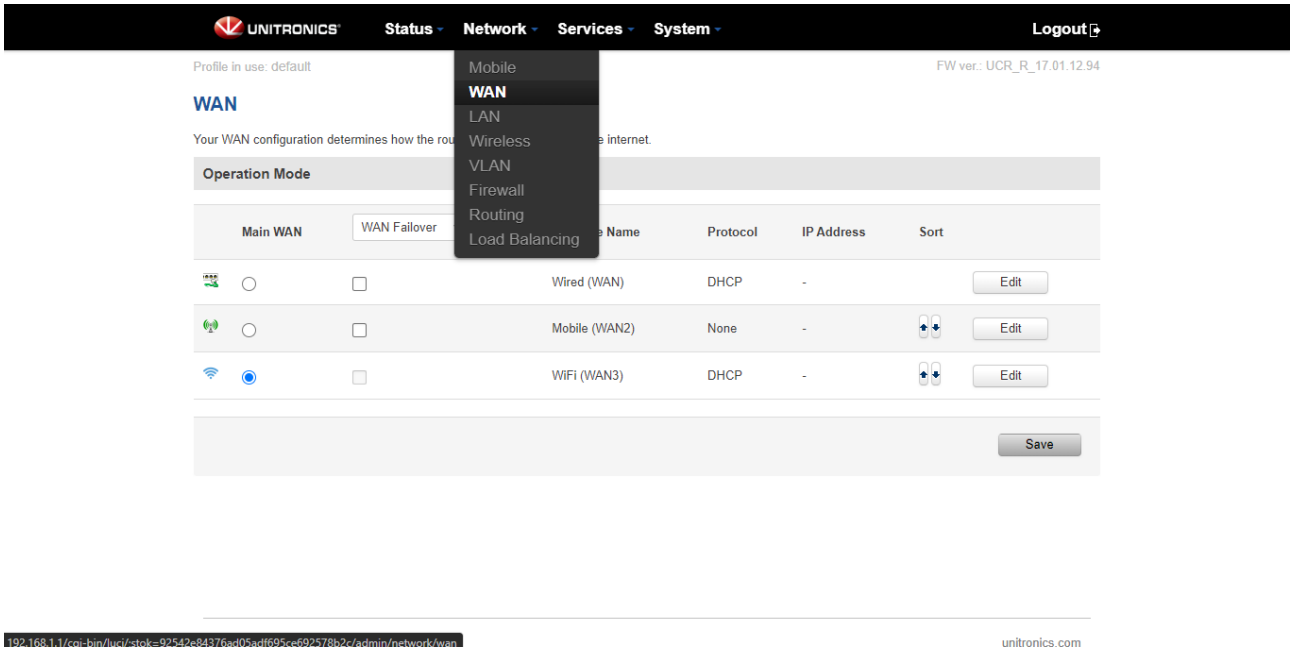
You must change password to leave this page! Password requirements: Minimum 8 characters, at least one uppercase letter, one lowercase letter and one number.

Administrator Password

New password

Confirm new password

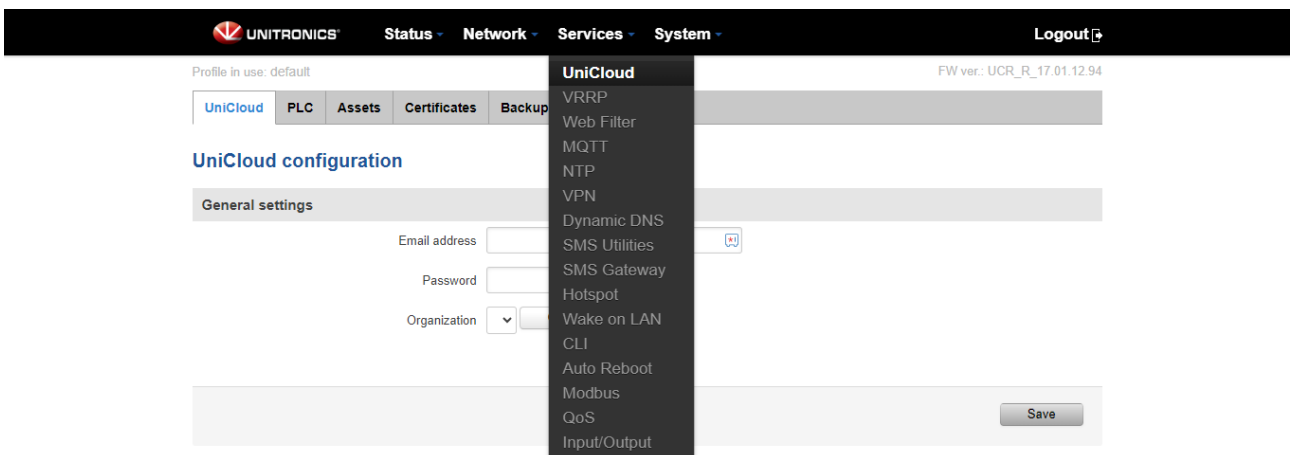
- You will then be taken to the overview screen, next I will tell you how to connect to the Internet with your UCR Router. Go to the network tab and press WAN. This will take you to the WAN page where you can select either 1 of 3 connection methods: Wired, Mobile or Wi-Fi. Select which method you will be using and follow the process through.



192.168.1.1/cm-bin/ucf/stok=92542e84376e403ad1695ce692578b2c/admin/network/wan

unitronics.com

- After your network is set up, please select the Services tab and go down to UniCloud.



- This will then take you to the UniCloud Configuration page, enter the details you use to sign in to your UniCloud account on Unitronics.io/login/ . Type in your details, press connect then press save.

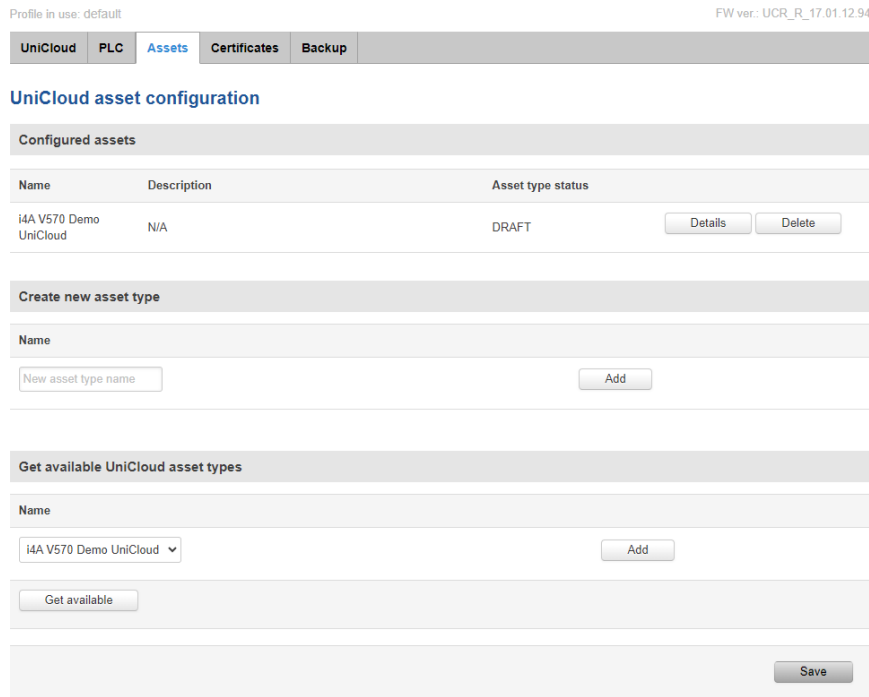
The screenshot shows the UniCloud configuration interface. At the top, there is a navigation bar with the UniCloud logo and menu items: Status, Network, Services, System, and Logout. Below the navigation bar, the page title is "UniCloud configuration" and the sub-section is "General settings". There are three input fields: "Email address", "Password", and "Organization". The "Connect" button is located to the right of the "Organization" field. A "Save" button is located at the bottom right of the configuration area.

- After you have set up your UniCloud configuration head over to the PLC tab and add your PLC details including Model, Serial Number, PCOM Password & PLC IP Address (Defined in PLCs ladder logic)

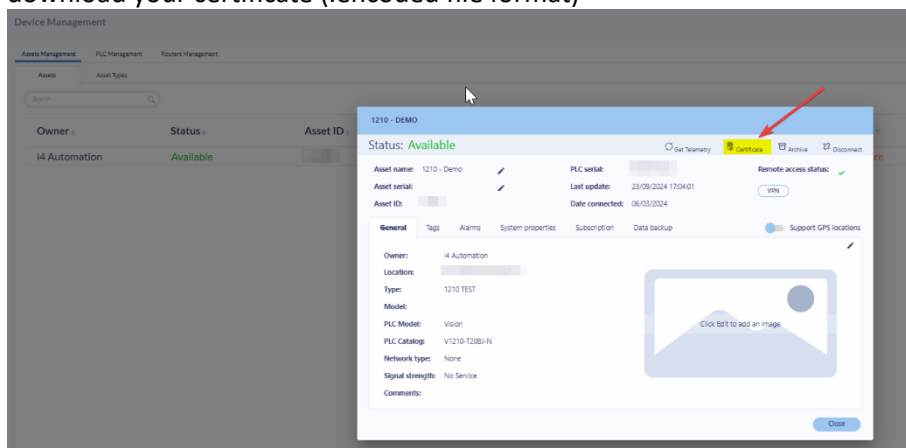
The screenshot shows the UniCloud configuration interface for the PLC tab. At the top, there is a navigation bar with the UniCloud logo and menu items: Status, Network, Services, System, and Logout. Below the navigation bar, the page title is "PLC configuration" and the sub-section is "Configured PLC's". There is a table with the following columns: Name, Model, Serial, Timeout, and Enabled. The table contains one row: "V570 i4a Demo PLC", "V570", "", "1", and a checked checkbox. There are "Details" and "Delete" buttons for this row. Below the table, there is a "New PLC" section with a "Name" field and an "Add" button. A "Save" button is located at the bottom right of the configuration area.

Name	Model	Serial	Timeout	Enabled
V570 i4a Demo PLC	V570		1	<input checked="" type="checkbox"/>

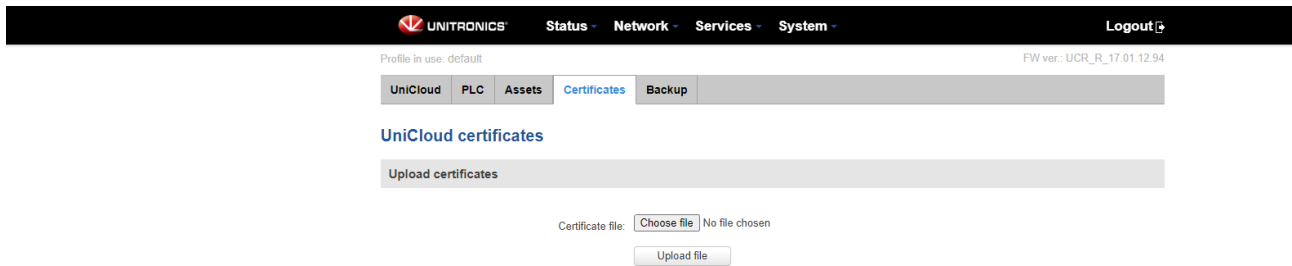
- After this, go to Assets and add the asset you will be using in UniCloud Dashboard. This is where you will assign the data tags that will be sent from the PLC as telemetry to the cloud. Go to 'Create new asset type', name the asset and click 'Add' Go to 'Tags Configuration' within the asset and assign your data types from your project to be used in the Asset type. You will also add Alarms in a separate section here also. After you're finished, save and sync to the UniCloud then press save.



- Log in to your Unitronics.io account and navigate to 'Device Management' on the left menu and from the 'Asset Management' tab select 'Add' from the right hand side and select the asset defined in the router in step 8. Now click on this asset and from here you can download your certificate (.encoded file format)



10. load this certificate into the Certificates tab on your UCR page.



Now you should be fully connected and ready to use your UniCloud Dashboard on Unitronics.io to display and log values from your PLC.

When using VPN connection run the VPN and connect to the VPN IP address (Usually 127.0.0.1) and the port configured in your VisiLogic ladder logic downloaded to PLC.