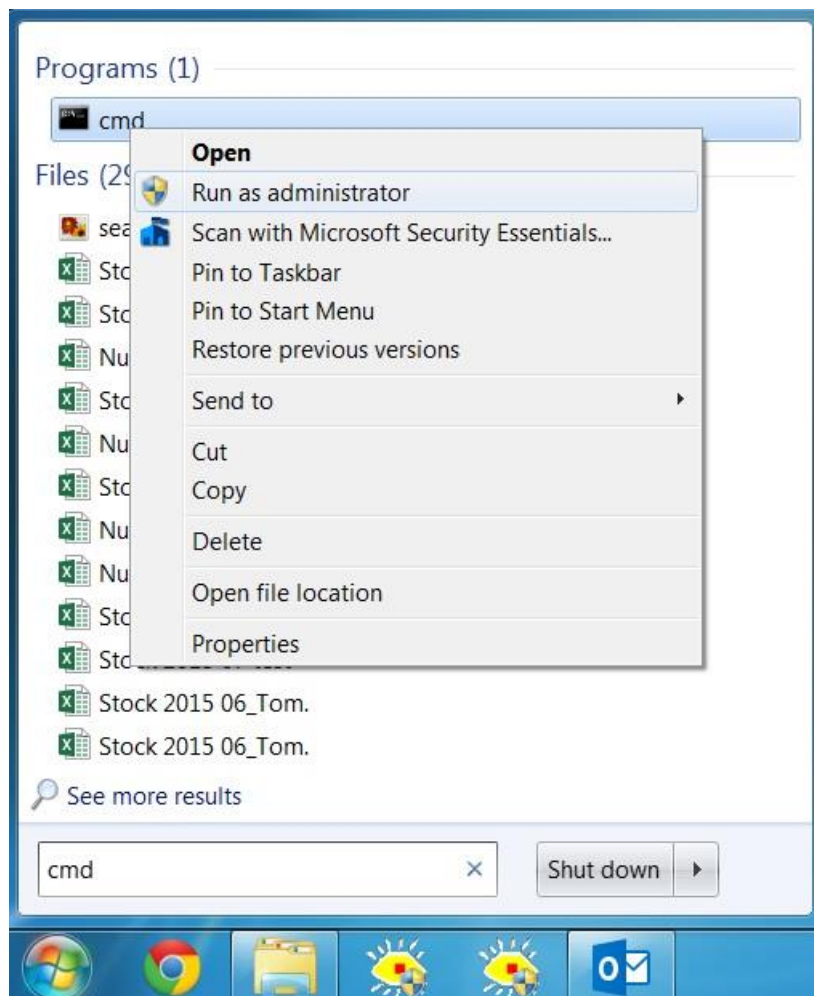


## Deleting Unwanted COM ports

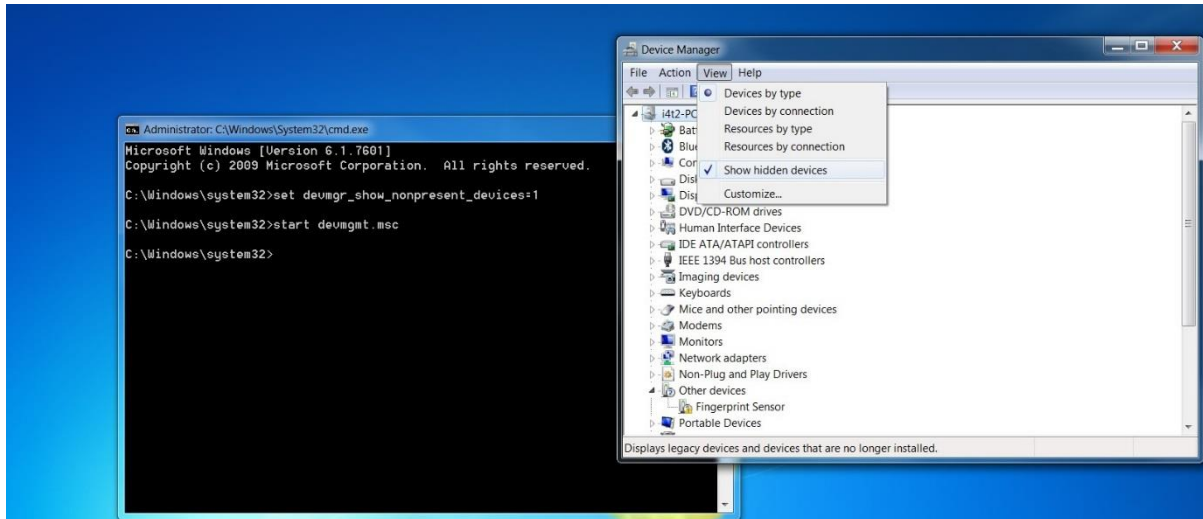
### Deleting Unwanted COM ports

When connecting Samba via USB with Visilogic each time a new Samba is connected to the PC it is assigned a new COM port. Visilogic can only recognise up to 16 COM ports so it is fairly easy to run out of available ports. The following will show you how to delete the unused ports so you can connect more Samba units to your PC.

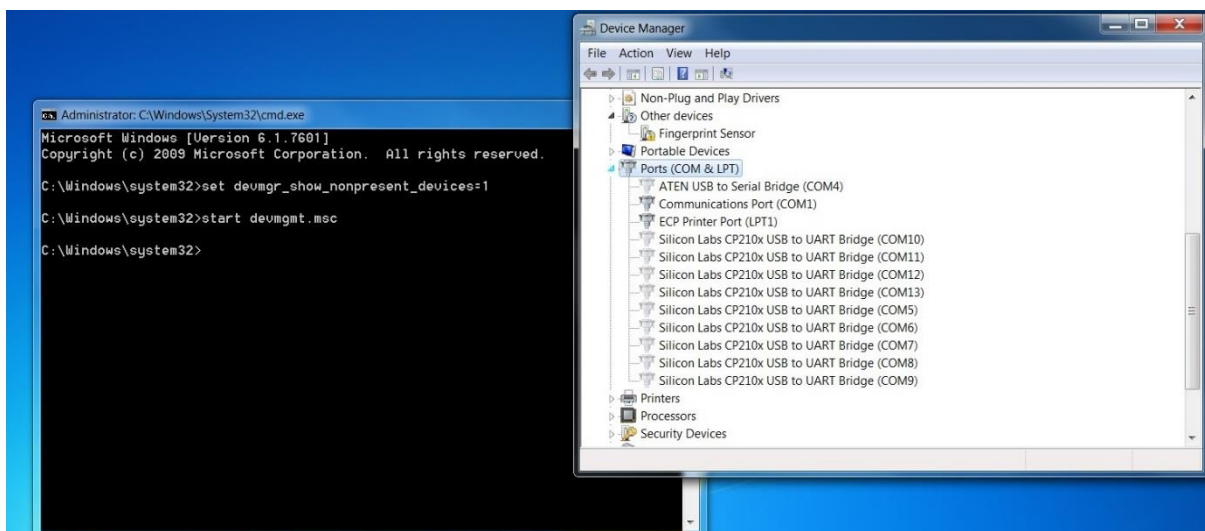


1. Open 'Command Prompt', go to windows start bar and search for 'cmd' right click and run as admin

## Deleting Unwanted COM ports



2. Enter 'set devmgr\_show\_nonpresent\_devices=1' and press return
3. Enter 'start devmgmt.msc'
4. This will open the Device manager as administrator
5. Click 'View' and select 'Show Hidden Devices'



6. Go to the 'Ports (COM & LPT)' drop down menu and expand.
7. From here you can delete and uninstall any unwanted COM ports
8. When completed go back into 'command prompt' and enter 'set devmgr\_show\_nonpresent\_devices=0' to return settings to default.